



INDIAN RIVER SHORES VULNERABILITY ASSESSMENT

Presented By:





Introduction and Overview



Reasons for a Vulnerability Assessment



Initial Collection Stages



Proposed Methodology



Stakeholder Input



Introduction and Overview



Reasons for a Vulnerability Assessment



Initial Collection Stages



Proposed Methodology



Stakeholder Input

What is a Vulnerability Assessment



What is a Vulnerability Assessment

Assesses the extent to which a community is vulnerable to adverse impacts from flooding resulting from:

1. increases in frequency and duration of rainfall events,



What is a Vulnerability Assessment

Assesses the extent to which a community is vulnerable to adverse impacts from flooding resulting from:

1. increases in frequency and duration of rainfall events,
2. storm surge from more frequent and severe weather systems,



What is a Vulnerability Assessment

Assesses the extent to which a community is vulnerable to adverse impacts from flooding resulting from:

1. increases in frequency and duration of rainfall events,
2. storm surge from more frequent and severe weather systems, and
3. sea level rise.



What is a Vulnerability Assessment

Assesses the extent to which a community is vulnerable to adverse impacts from flooding resulting from:

1. increases in frequency and duration of rainfall events,
2. storm surge from more frequent and severe weather systems, and
3. sea level rise.

Such adverse impacts pose economic, social, environmental, and public health and safety challenges to the state. To most effectively address these challenges



Introduction and Overview

At Risk vs. Resilient



@2007 buildingmance.com



Introduction and Overview

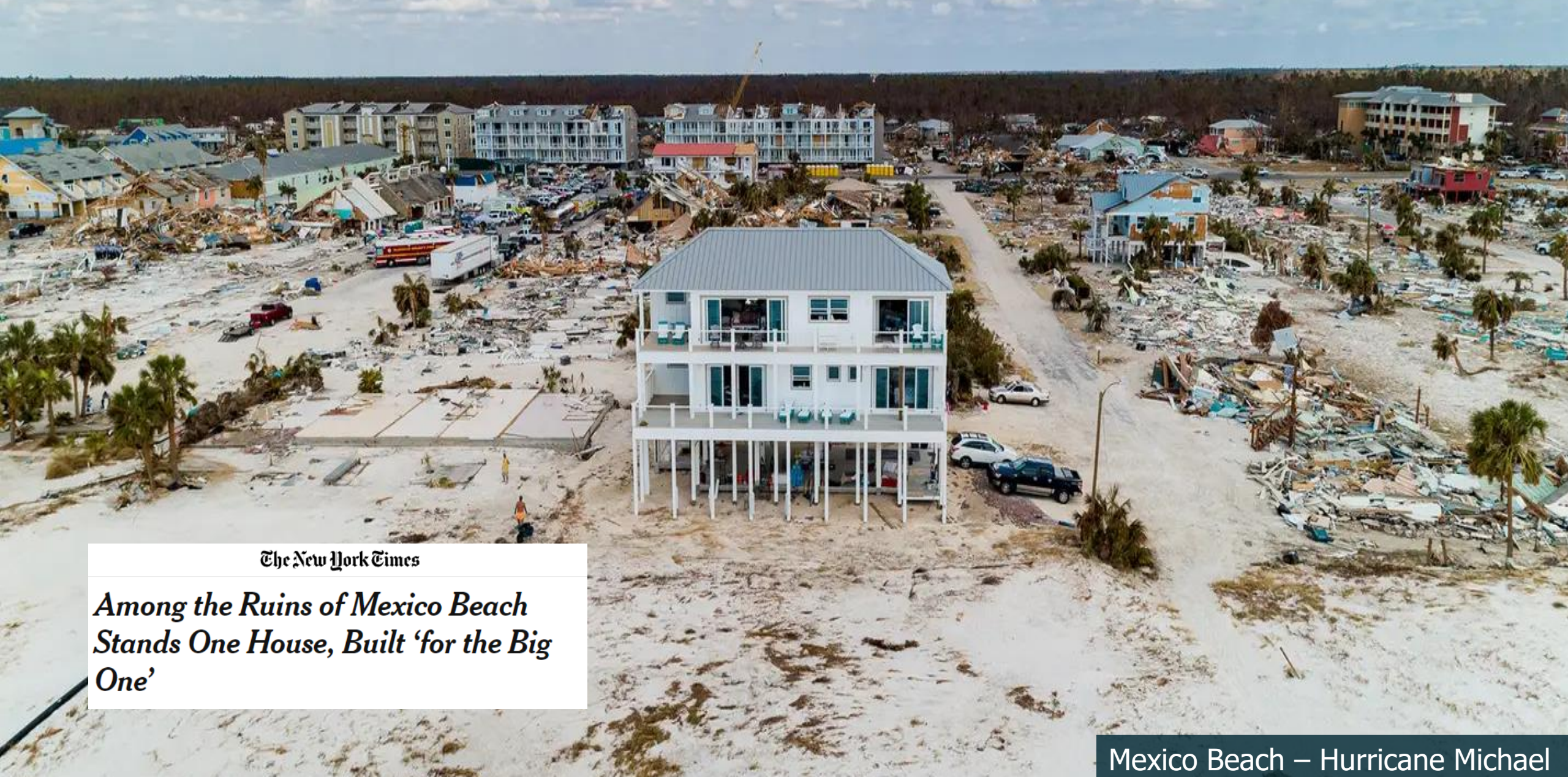


Daytona Beach – Hurricane Nicole

Introduction and Overview



Volusia County – Hurricane Nicole



The New York Times
***Among the Ruins of Mexico Beach
Stands One House, Built 'for the Big
One'***

Resilient



Cape Coral – Hurricane Ian



Babcock Ranch – Lee County



Introduction and Overview



Reasons for a Vulnerability Assessment



Initial Collection Stages



Proposed Methodology



Stakeholder Input



Why do a Vulnerability Assessment?

Florida Statute 380.093

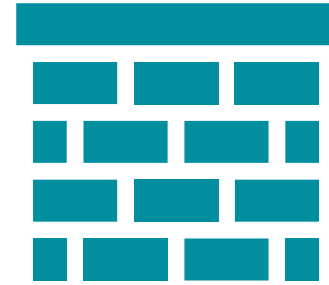
Funding Grants provided for:

- Resilience Planning and Data Collection
- Vulnerability Assessments
- Studies to reduce the impact of flooding and sea level rise

Questions for you to keep in mind



What Vulnerabilities does Indian River Shores face?



What projects can you think of that would make Indian River Shores more resilient?



Introduction and Overview



Reasons for a Vulnerability Assessment



Initial Collection Stages



Proposed Methodology



Stakeholder Input



Initial Collection Stages



Data



Critical Assets



Guiding Factors



Initial Collection Stages



Data



Critical Assets



Guiding Factors



Initial Collection Stages



Data



Topographic



Flood scenario-related data



Initial Collection Stages

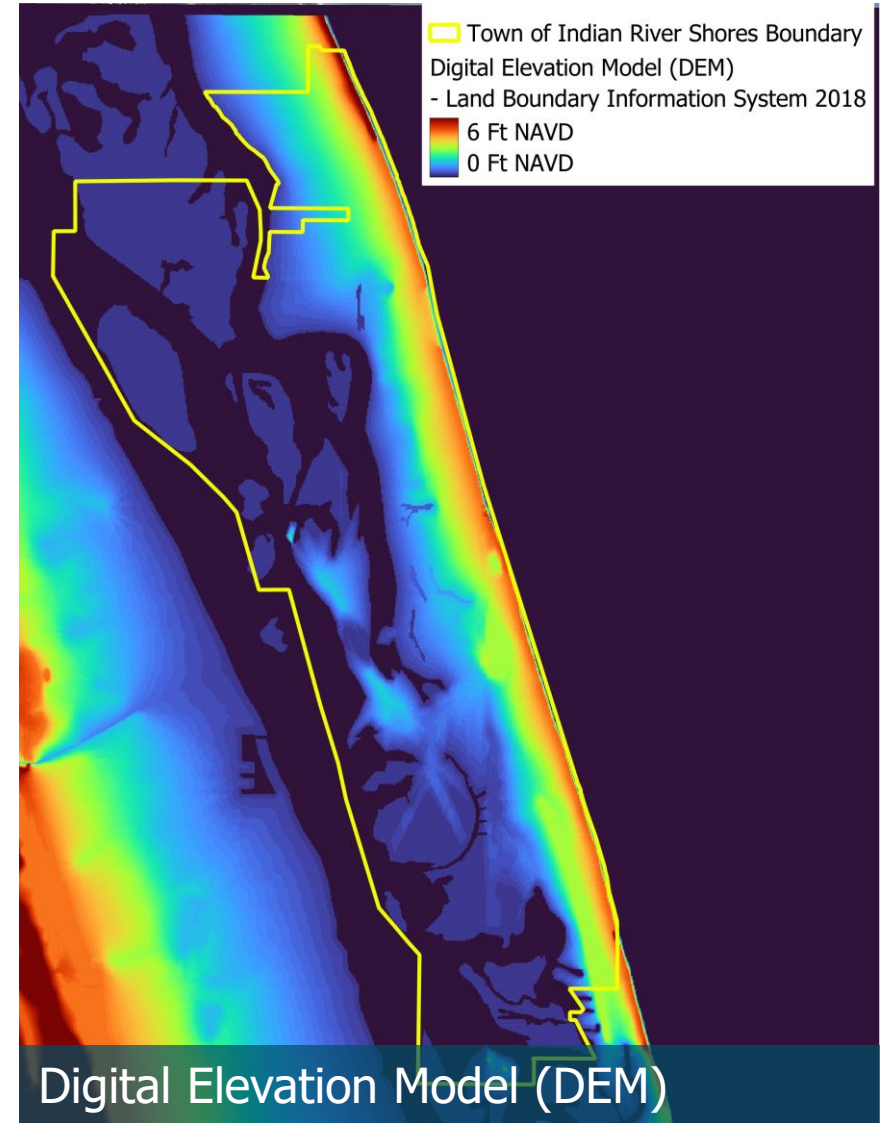
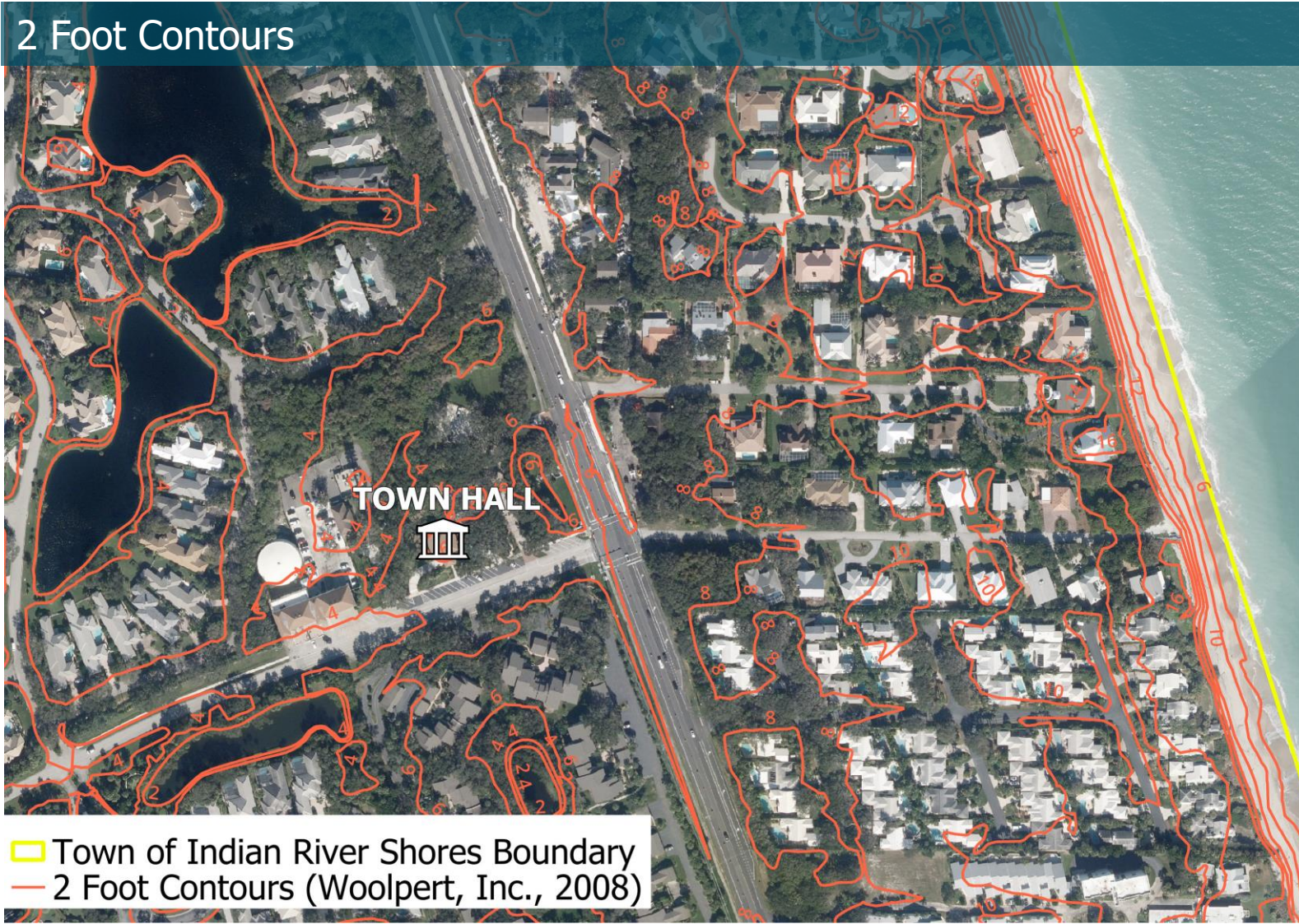


Data



Topographic

2 Foot Contours





Initial Collection Stages



Data



Topographic

3D LiDAR Elevation Point Cloud





Initial Collection Stages



Data



Topographic

3D LiDAR Elevation Point Cloud



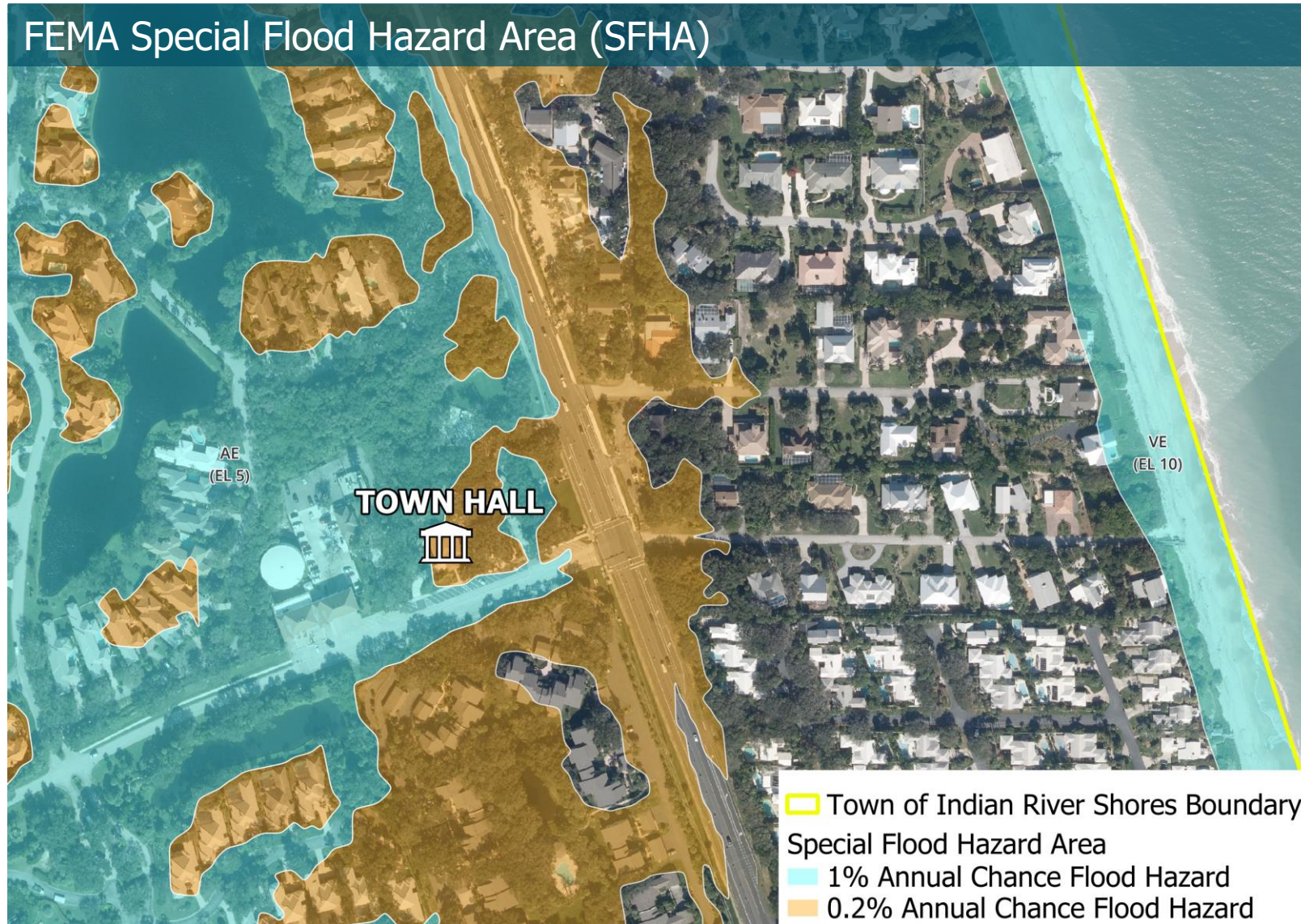


Initial Collection Stages

Data



Flood Scenario-Related Data



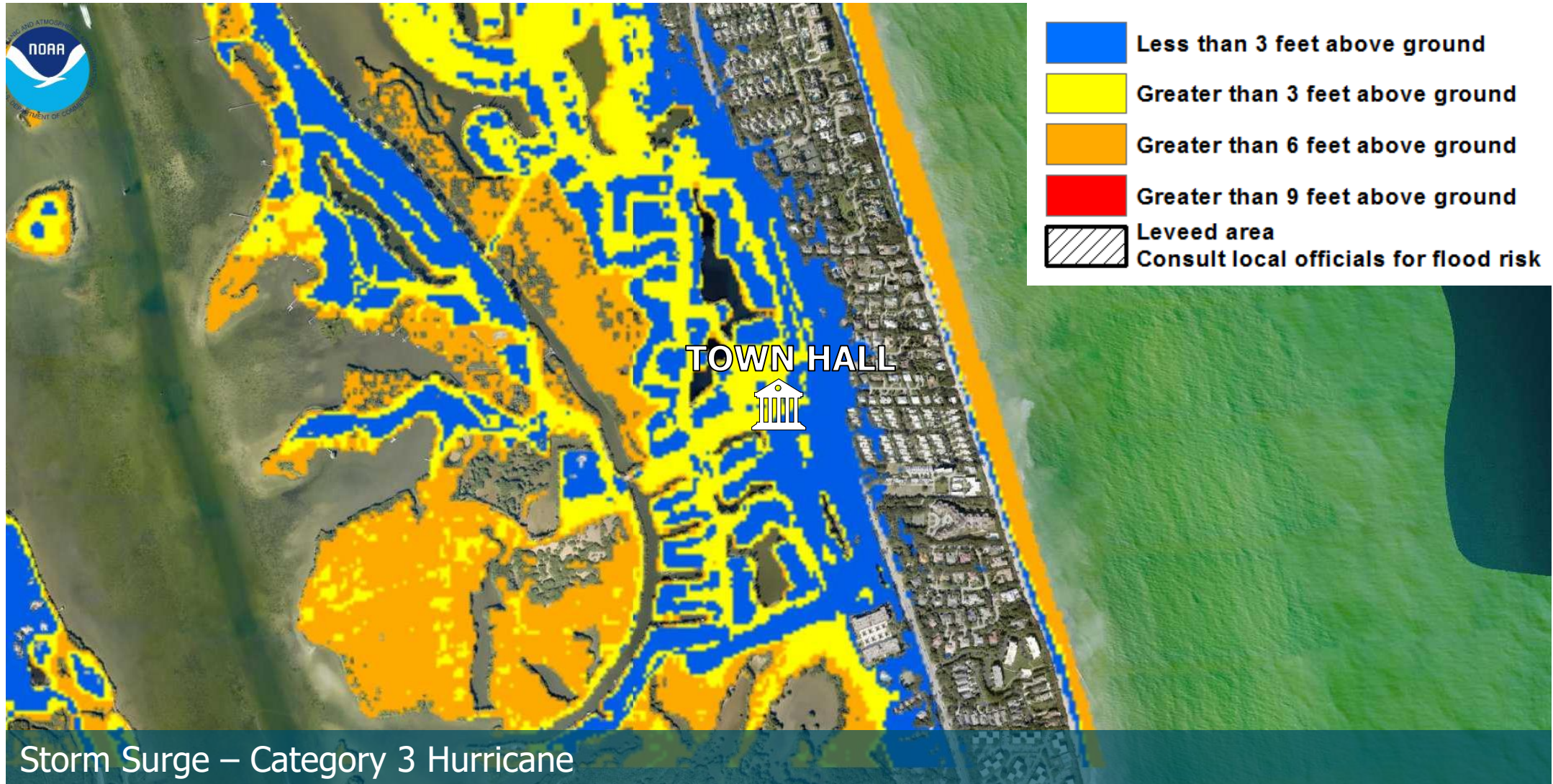


Initial Collection Stages

Data



Flood Scenario-Related Data



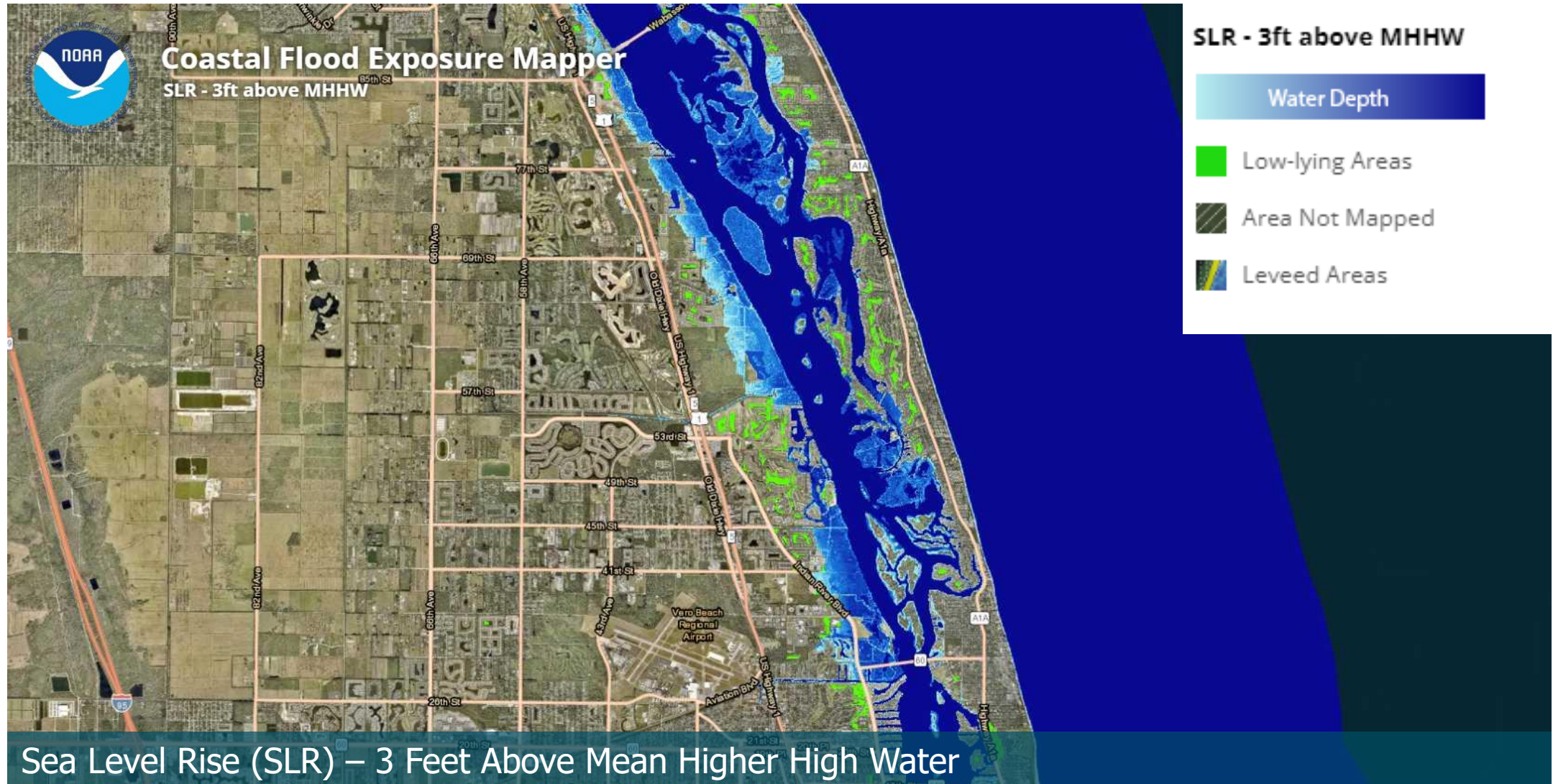


Initial Collection Stages

Data



Flood Scenario-Related Data





Initial Collection Stages



Data



Critical Assets



Guiding Factors



Initial Collection Stages



Critical Assets



Transportation assets and evacuation routes



Critical infrastructure



Critical community and emergency facilities



Natural, cultural, and historical resources



Initial Collection Stages



Critical Assets





Initial Collection Stages



Critical Assets





Initial Collection Stages



Critical Assets





Initial Collection Stages



Critical Assets





Initial Collection Stages



Data



Critical Assets



Guiding Factors



Initial Collection Stages



Guiding Factors



Will certain critical facilities be inaccessible due to flood?



Will certain critical assets be impacted by flood?



Do we know how other municipalities we rely on are operating?



How will emergency response be affected?



Introduction and Overview



Reasons for a Vulnerability Assessment



Initial Collection Stages



Proposed Methodology



Stakeholder Input



Proposed Methodology

Critical Assets

Scenarios

	Transportation / evacuation	Critical Infrastructure	Critical Facilities	Natural/Cultural Resources
Storm Surge	<input checked="" type="checkbox"/>	<input checked="" type="checkbox"/>	<input checked="" type="checkbox"/>	<input checked="" type="checkbox"/>
High Tide	<input checked="" type="checkbox"/>	<input checked="" type="checkbox"/>	<input checked="" type="checkbox"/>	<input checked="" type="checkbox"/>
Sea Level Rise (SLR)	<input checked="" type="checkbox"/>	<input checked="" type="checkbox"/>	<input checked="" type="checkbox"/>	<input checked="" type="checkbox"/>
Storm Surge + SLR	<input checked="" type="checkbox"/>	<input checked="" type="checkbox"/>	<input checked="" type="checkbox"/>	<input checked="" type="checkbox"/>
High Tide + SLR	<input checked="" type="checkbox"/>	<input checked="" type="checkbox"/>	<input checked="" type="checkbox"/>	<input checked="" type="checkbox"/>



Introduction and Overview



Reasons for a Vulnerability Assessment



Initial Collection Stages



Proposed Methodology



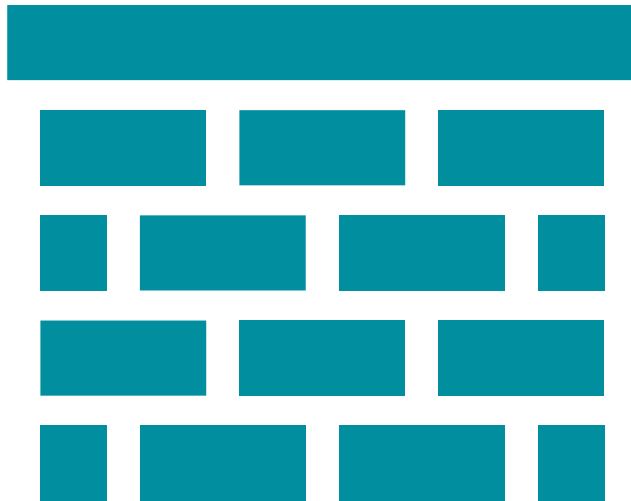
Stakeholder Input



What Vulnerabilities does Indian River Shores face?



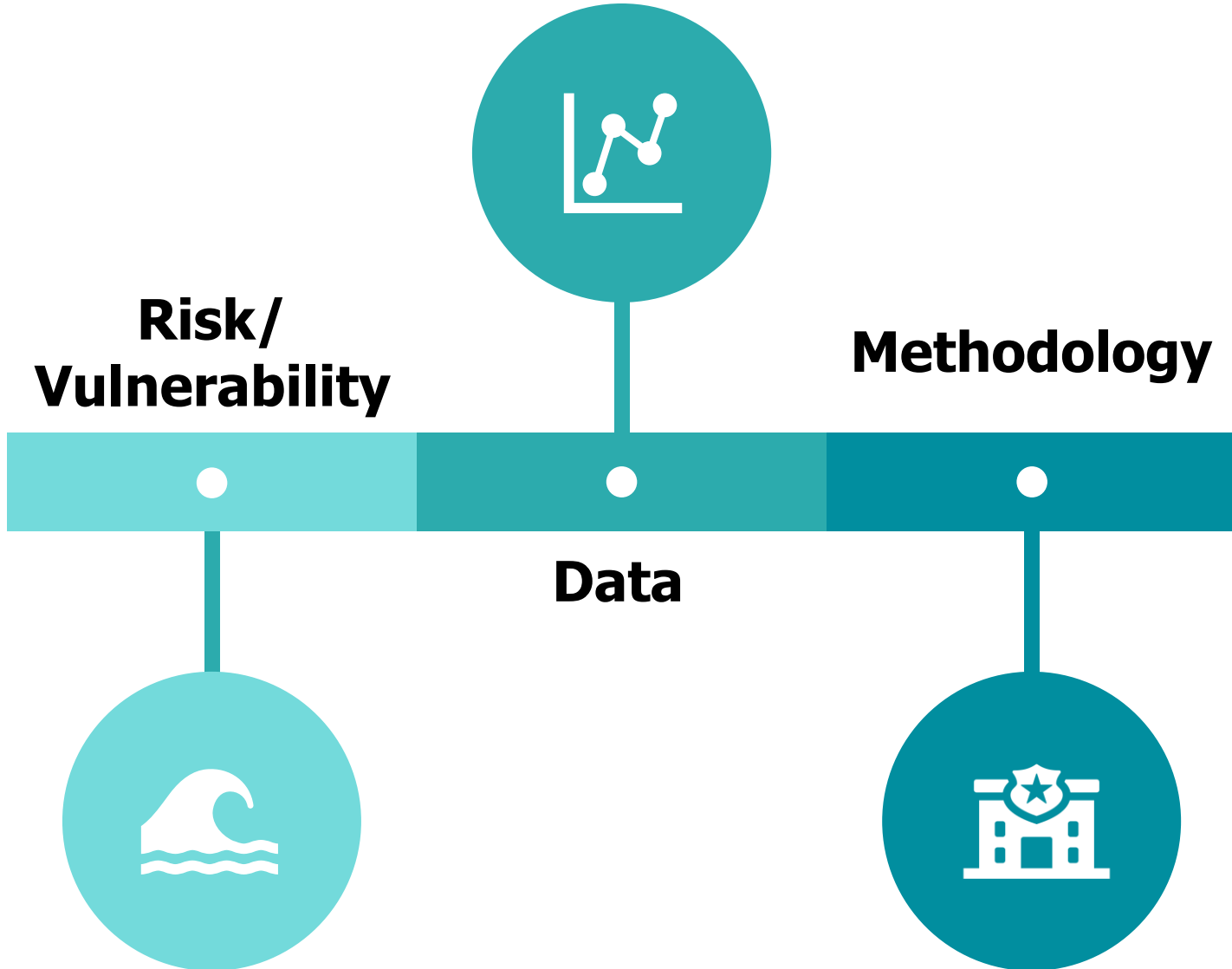
Stakeholder Input



What projects can you think of that would make Indian River Shores more resilient?



Stakeholder Input





Stakeholder Input

